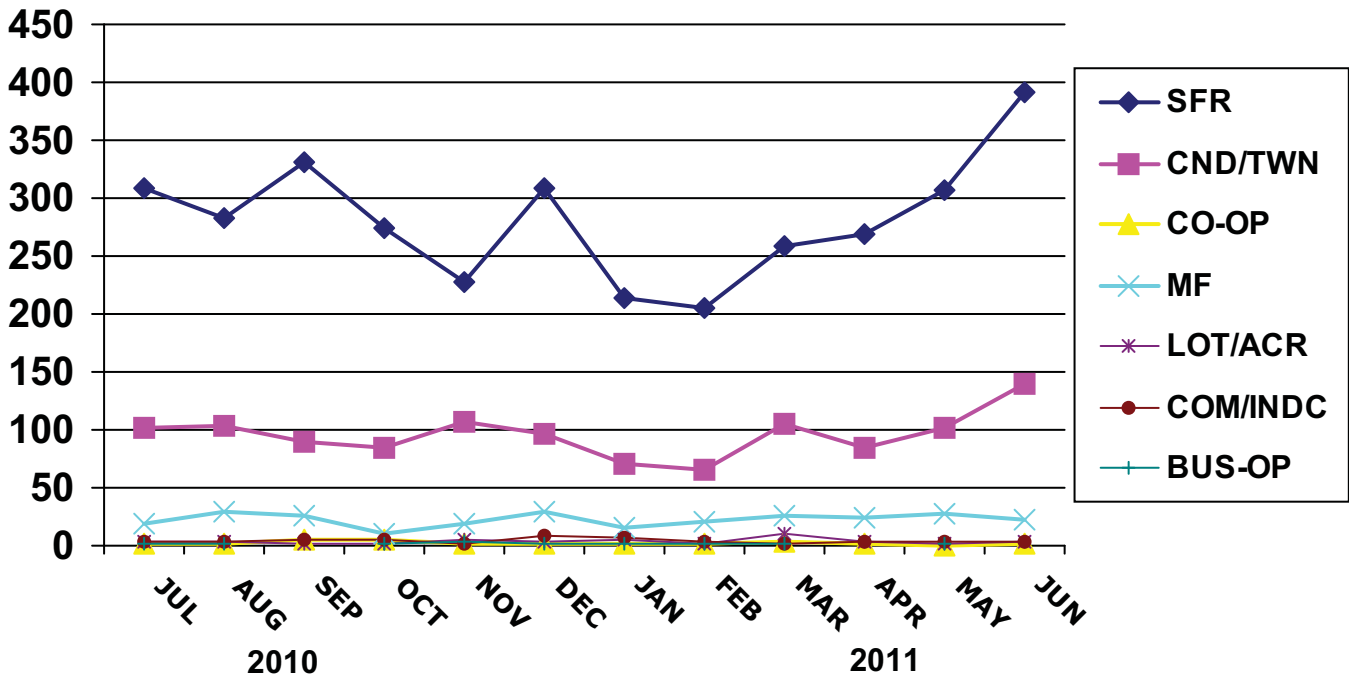




SOLD LISTINGS BY MONTH



2009 - Number of Units

PROPERTY TYPE	JAN	FEB	MAR	APR	MAY	JUN	JUL	AUG	SEP	OCT	NOV	DEC
Residential One Family	186	191	229	241	304	432	477	441	400	414	440	355
Condo/Townhouse	82	71	85	96	120	170	184	163	161	180	219	139
Co-Op	7	2	4	2	2	12	13	7	1	7	8	7
Multi-Family	7	16	20	17	12	22	21	15	20	27	21	28
Lots and Acreage	1	1	3	2	3	0	2	4	3	3	2	4
Commercial/Industrial	2	3	1	6	6	5	4	1	6	9	12	5
Business Opportunity	2	0	0	1	5	1	1	0	1	2	1	0
Adult Community	26	16	30	31	29	33	44	47	48	55	43	50

2010 - Number of Units

Residential One Family	219	170	302	335	349	636	309	282	331	274	228	308
Condo/Townhouse	87	69	114	155	148	253	101	104	89	85	107	96
Co-Op	5	6	3	4	4	4	1	2	6	5	2	2
Multi-Family	18	20	35	24	17	39	19	29	26	10	19	29
Lots and Acreage	8	3	4	8	4	6	3	3	1	2	5	3
Commercial/Industrial	4	2	3	4	5	7	4	3	6	5	2	8
Business Opportunity	0	1	1	3	2	2	1	1	0	2	4	1
Adult Community	28	27	38	46	39	66	26	46	40	47	46	38

2011 - Number of Units

Residential One Family	214	205	258	269	307	391	0	0	0	0	0	0
Condo/Townhouse	71	65	105	84	102	140	0	0	0	0	0	0
Co-Op	1	2	4	2	0	2	0	0	0	0	0	0
Multi-Family	16	20	26	25	27	22	0	0	0	0	0	0
Lots and Acreage	5	2	10	4	1	4	0	0	0	0	0	0
Commercial/Industrial	7	4	2	4	4	4	0	0	0	0	0	0
Business Opportunity	1	2	1	0	1	0	0	0	0	0	0	0
Adult Community	31	18	51	37	50	57	0	0	0	0	0	0

